

Skip Hire

The Ultimate Guide

For the average person, skip hire is one of those things that we will all need at some point in our lives, but it's only when it comes to actually booking a skip that we realise how little we know about it.

Did you know that there are different types of skips?

Our that only certain skip types can take heavy loads such as bricks, concrete and soil?

And who can be expected to know what skip size they are going to need before they start using it?

This ultimate guide to skip hire has been created to help answer those questions and give you a better understanding of what is actually involved.



Contents

- Why Hire a skip?
- Types of skip
- What size skip do you need?
- What can't be put in a skip?
- How much does skip hire cost?
- Skip permits
- How long can you keep a skip?
- What happens to your waste?
- Preparing for delivery
- Preventing fly tipping
- Level loads
- Wait and load skips



Skip Hire Essentials

When it comes to skip hire there certainly are a lot of considerations, and unless you are already familiar with the industry then what you are faced with can appear quite confusing at first glance, but it really **doesn't have to be difficult**.

Beyond the jargon of 'yards' and 'cubic feet' is the fact that you will be undertaking some sort of clearance or construction project that will mean you have a certain amount of rubbish or waste to get rid of.

And while most reputable skip hire companies will easily be able to guide you through the whole process and offer advice where needed, it is still going to be **beneficial** to have a general understanding of how it all works and what you might need before you get started.

Why Hire a Skip?

There are many reasons why people might **need** to hire a skip, but there are also some useful and important reasons as to why you should actually **choose** to hire a skip:

1. Skips are delivered and collected conveniently from your location
2. Saves multiple visits to your local tip or recycling centre
3. Very cost effective when considering the time and effort it would take to sort and dispose of various waste materials yourself
4. Improves hygiene by keeping rubbish in one place and prevents attracting rodents and pests to piles of waste on your land.
5. Reduces environmental impact through saved journeys, as well as preventing ground contamination associated with deteriorating waste
6. Ensures that your waste is disposed of responsibly which allows much of the material to be recycled.



Types of Skip?

Skips come in a range of sizes and shapes to suit various purposes. It is important to know about skip types **before ordering your skip** to save any possible issues down the line. For example: Nobody wants to fill a large skip to then be told that it can't be collected, or has to be broken down into smaller loads.

Builders Skips

Builders skips are the most commonly used skips and are generally the standard looking skips that you tend to see. They are called Builders Skips because they are the largest sized skips that can be used for **heavy loads** - such as bricks and concrete - and are therefore favoured by tradesmen who handle large volumes of heavy material.



The reason for this is that a large skip filled with bricks would be far too heavy to lift safely back onto the truck when collected.

Builders skips are also the largest size that are generally permitted to be placed on a public road when required.

All of this makes them an ideal choice to suit **most skip hire requirements**.

Mini Skips



Mini Skips are available for people who know that they will only have a small volume of waste. They are also ideal for use in areas of **limited access** due to their size.

As they are smaller than builders skips, a mini skip can also be used for heavy loads of rubble and soil. Typically they are used for smaller building jobs such as driveways and extensions, or garden projects and clearances.

Maxi Skips



Maxi skips are mainly used for disposing of larger, **bulky items** such as unwanted furniture. This makes them perfect for home clearances and office or shop refurbishments.

Maxi skips can also be used for general waste from building projects, but you have to be mindful of the weight of the load and should not fill a large skip with too much heavy material.

Roll On Roll Off Skips



Roll On Roll Off skips - also known as RORO skips - are mainly suited to commercial purposes, however they are becoming more common for **large home building projects** when space is available. Clearly they can take huge volumes of all types of waste material and will save the need to keep replacing filled skips over long term use - making them a more environmentally friendly solution.

What Size Skip Do You Need?

Knowing what size skip to hire is one of the most difficult questions to answer and will depend upon the **types** and **volumes** of waste you want to clear. Skip hire companies will usually provide guidance on skip **capacity** and **dimensions**, so it should be easy enough to work out how much space you will need for a simple home clearance or garden project.

But if ever you are not sure what to do then remember that providers will always be happy to help and offer advice through their years of experience.

In most cases it is advised to **go bigger** rather than smaller to prevent the need to hire an additional skip or be left with excess rubbish. There is usually very little difference in cost, and talking directly with providers could mean getting a **better deal** as they help you decide.

Below you will find our standard skip sizes to show typical dimensions and capacities.



2 Yard Mini Skip			
Length	Width	Height	Bin Bags
1.60m	1.20m	0.90m	20-25

8 Yard Builders Skip			
Length	Width	Height	Bin Bags
3.50m	1.75m	1.20m	70-80

4 Yard Mini Skip			
Length	Width	Height	Bin Bags
2.30m	1.50m	1.00m	25-30

10 Yard Maxi Skip			
Length	Width	Height	Bin Bags
3.50m	1.75m	1.65m	90-100

6 Yard Builders Skip			
Length	Width	Height	Bin Bags
3.40m	1.70m	1.00m	50-60

12 Yard Maxi Skip			
Length	Width	Height	Bin Bags
3.60m	1.75m	1.70m	110-120

What Can't be Put in a Skip?

You can put most types of waste material in a skip but there are restrictions from potentially **hazardous items** that will need to be disposed of responsibly in line with relevant safety regulations for the type of material. This can include your local tip or recycling centre, or **specialised waste services**. Information for your local area can be found on the [GOV website](#).



Here is a list of items that cannot be put in skips:

- Asbestos
- LPG bottles
- Gas canisters and gas bottles
- Liquids
- Oil, petrol, diesel
- Paint & Cans of paint
- Tyres
- Human or animal waste
- Clinical or medical waste, including syringes
- Hazardous & toxic materials
- Food waste
- Fridges, freezers and air conditioning units
- TVs & computer screens
- Electrical appliances & equipment
- Batteries
- Fluorescent tubes
- Plasterboard

You should be aware that you can incur additional costs and risk having prohibited items returned to you for safe disposal. This means that you should also be careful of hazardous items other people put in your skip if it is accessible - which does unfortunately happen on occasion.

How Much Does Skip Hire Cost?

The cost of skip hire will depend upon the **size of skip** you require, as well as the **types of waste** that you need to dispose of. For example, mixed waste will require more sorting than a skip full of concrete, and non-recyclable rubbish may carry a higher cost than a skip filled with wood due to processing requirements and landfill costs.

For this reason many skip companies will show a 'from' price on advertising and websites - based on the smallest skip size - but the **only way to get an accurate cost** is by contacting your local provider for a direct quote.

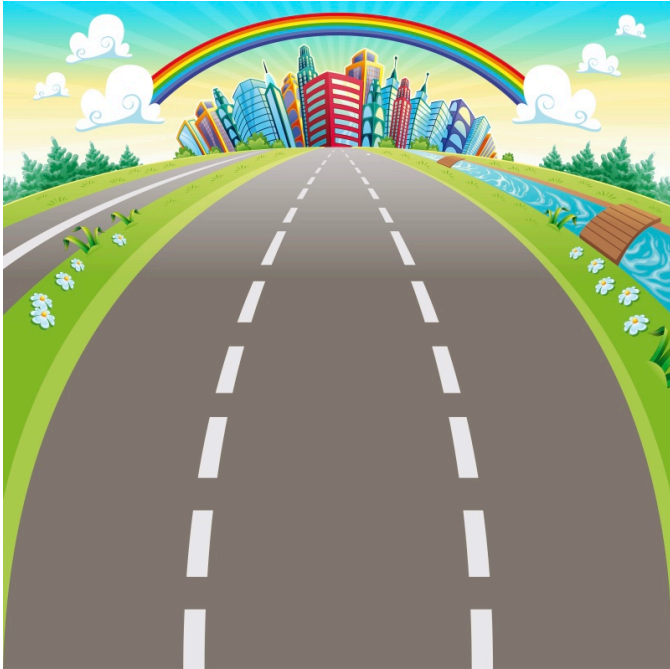


Prices given should always include delivery and collection, but will not include a skip permit if required.

Skip Permits - On Road Skips

When you don't have sufficient space to place a skip on your property, you **cannot** simply put a skip on a road (public highway) or pavement **without holding a valid permit**.

Essex skip permits are controlled and issued by the [local district council](#) and can be arranged directly or through your skip hire company where applicable. You must have a skip permit before your skip arrives and it can take anywhere from 1 day to 7 days to issue, so it is advised to organise permits ahead of time.



Skip Permit Costs

The cost of skip permits will depend upon your **specific road and requirements**. As a rule, busy roads and streets with restricted parking will incur higher charge rates.

Each council will charge different amounts for given time periods and this **can include additional fees** if a parking suspension is required for your road - where skips may need to be placed on yellow lines or in restricted parking areas.

You can also pay a small charge to have lights put on the skip to prevent potential accidents at night.

Contact your local council or search online for more information about permits and costs.

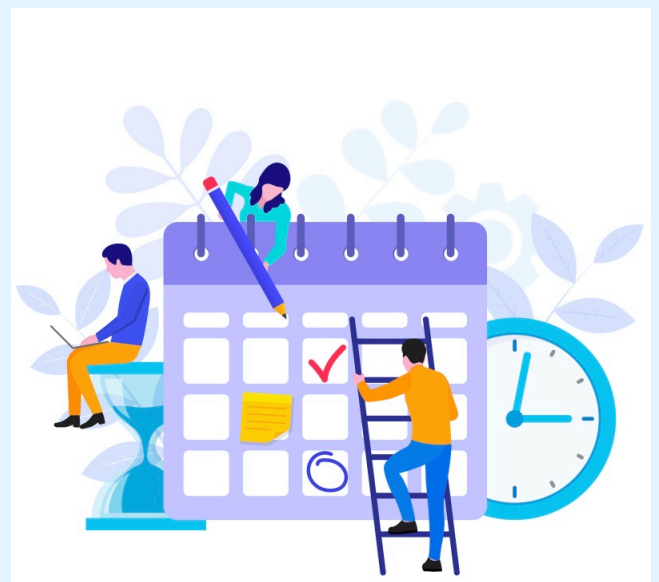
How Long Can You Keep a Skip?

The duration of skip hire is **typically 1 to 2 weeks** but will depend on what you are using it for. It is usual practice to arrange the collection of a skip once you have filled or finished using it, but you can also specify specific dates at the time of booking if preferred.

If you know that you will be using the skip over an **extended period** then it is best to discuss this with your provider in advance.

Often there will be no additional charge, or only a minimal charge - particularly from more established companies that stock a large amount of skips and don't have to worry about getting them back for rehire.

In the event that your skip is on the road you must **remember to extend your skip permit** in line with the duration of hire.



What Happens to Your Waste?

Licensed skip hire companies are bound to responsible waste disposal and recycling in order to hold Environment Agency permits.



This ensures that your waste is **handled appropriately** at all times.

Skips will be collected and taken to a local waste transfer station that uses machines and picking teams to sort through each load in order to separate and retrieve materials such as paper, metals, wood and aggregates for recycling and reuse.

Many waste stations are able to **recycle up to 95%** of all waste received which has a huge impact on reducing the amount of rubbish sent to landfill sites.

Other Skip Hire Considerations

Preparing for Delivery

In most instances the delivery of a skip will be a **simple procedure**, but there are numerous circumstances that can cause major issues on the day, particularly in busy or restricted areas. It may seem obvious to think of these things and no doubt most people would... But just in case, here are a **few pointers**.

Placement

By the time your skip arrives you should know exactly where you want to **set the skip down** when it is delivered. Ideally this will be an open area with plenty of space around it, but often this is not the case so planning ahead can be essential to a smooth process.



When thinking about a suitable location for a heavy skip to rest for a prolonged period of time, you need to also remember not to **block access points** such as pathways, gates and manhole covers that may be required while the skip is in place.

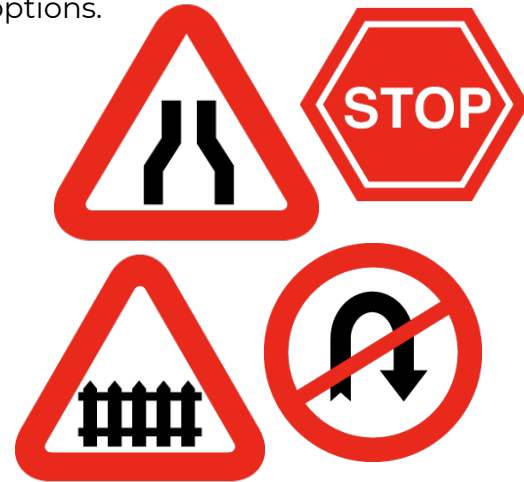
There have even been reports of cars and building machinery being blocked in by skips where customers had not thought about the **bigger picture**.

Access

Skip delivery drivers are generally very skilled and have encountered every scenario imaginable when delivering and collecting skips, however it is important that you consider any **access issues** and discuss them with the provider who can review your options.

Skip lorries are long, high and wide vehicles that can be loaded in a number of ways, so drivers need to be notified of anywhere you think they may struggle to manoeuvre properly. This could be a cul-de-sac, narrow road, or a tight turning into a driveway where cars may or may not be parked to cause obstruction?

Equally you need to make note of height restrictions - such as overhead lines or trees - that could prevent the safe delivery of your skip, or may lead to damages and disruption.



Protecting Your Property

Again, it is important to consider that skips and skip lorries are very heavy, especially when being collected. If your skip is being lowered onto a driveway you may want to lay planks of wood under the skip to prevent indents or **damage** to surfaces.

Equally if you have a large driveway, you may want to consider an alternative location that prevents the lorry driving over it at all. Another consideration is for narrow and awkward spaces where there can be a risk of scrapes to walls or damage to fences.

Easy solutions include removing fence panels or covering walls or gates with a thick rug. It would also be a good idea to make sure your cars are well out of the way!

Allowing Time

Skip hire companies try to be **flexible** to meet their customers needs, so you may want to allow some flexibility at your end, especially when you have specified a time for delivery.

Most providers operate a fleet of vehicles to manage any **scenarios** that may occur, but there are going to be times when delays can be caused by traffic and issues on the roads - particularly in high traffic areas or at certain times of the day.

In any event the provider should contact you when problems or possible delays are expected, but it may be wise not to plan anything too close to the arranged delivery time **just in case**.

Please note that access issues can also affect the time it takes to deliver your skip.

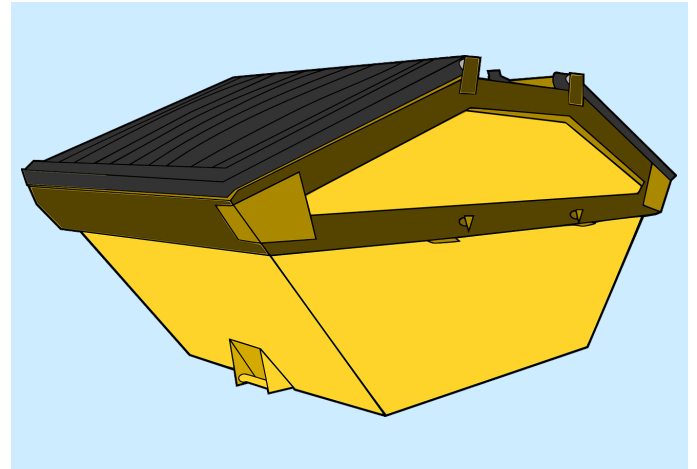


Preventing Fly Tipping

Another unfortunate situation that can occur is when others see your skip as an opportunity to rid themselves of their own unwanted rubbish. Often this may only be a couple of small items that cause very little impact on your skip capacity.

But in the wrong circumstance or location an empty skip can quickly be filled by such people who wish to rid themselves of much larger or problematic items such as mattresses, washing machines, or even hazardous waste materials.

You can prevent fly tipping by using an **enclosed skip**, putting you skip somewhere that it can't be accessed easily, or reduce the risk by making sure that you are ready to start loading your skip as much as possible on arrival.



Summary

Hopefully this guide has given you a good insight into the various aspects of skip hire that may come into play when it comes to ordering a skip for your next project. Additionally we hope that it has highlighted a need to maybe plan, at least a little, in order to make the best use of your skip and save any potential for problems or additional costs.

Whatever your circumstance, if you ever need help then we really do advise you to get in touch with your local skip hire company who will be pleased to offer their professional support.



About Essex County Skips

Essex County Skips operates across the whole of Essex and provides domestic and commercial Skip Hire, as well as Demolition and Site Clearance work. Our fleet of vehicles can be seen throughout the region on a daily basis, which is the reason we are always able to respond quickly to all enquiries.

If you need cheap and fast Skip Hire in Essex for any purpose, call ECS to see how we can help.

[Get an Instant Quote](#)

Basildon
Leigh on Sea

Benfleet
Pitsea

Billericay
Rayleigh

Brentwood
Rochford

Canvey Island
Southend

Chelmsford
Wickford

Grays
Essex



01268 773 223